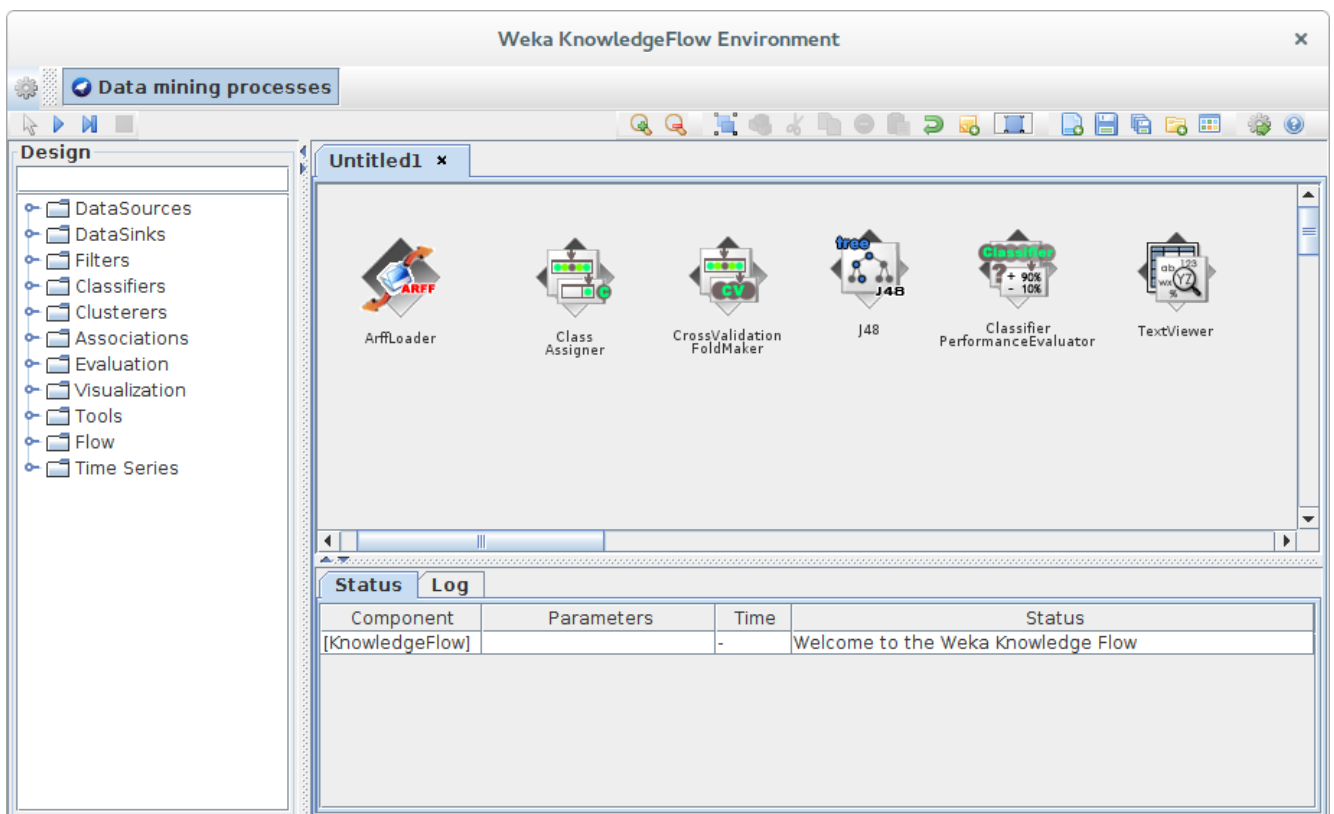


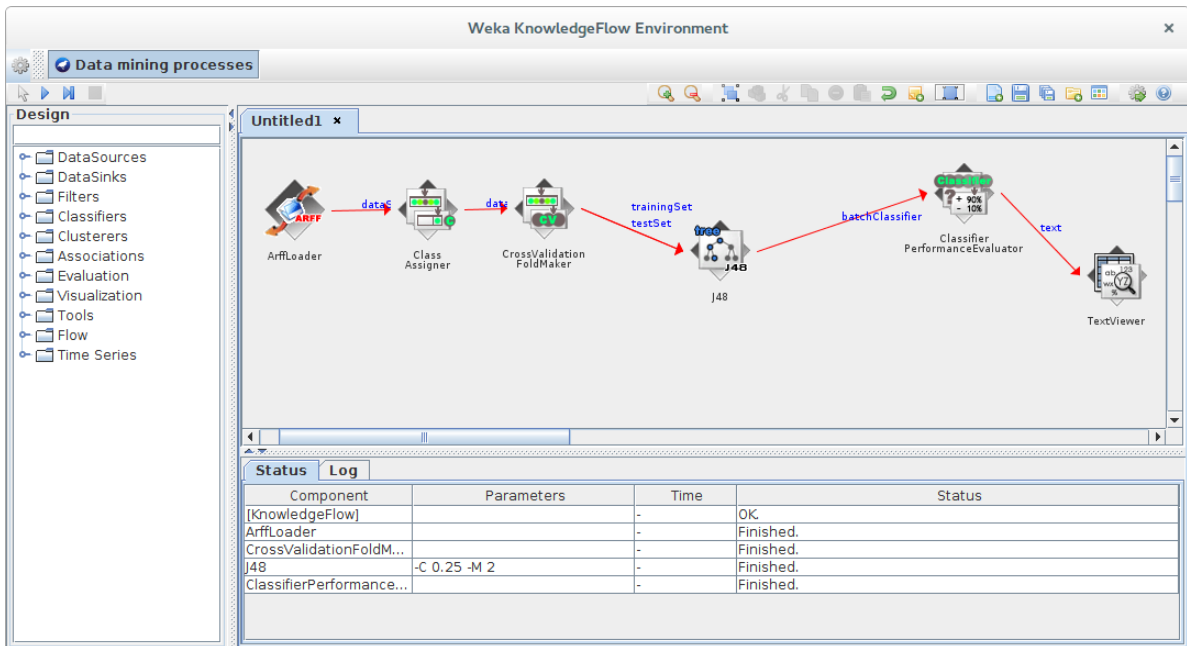
Step1: Adding required nodes

- Add a data source node from “DataSources”
- Right click to configure it with a data set (Load Brest Cancer)
- Add a classAssigner node from “Evaluation” and a CrossValidationFoldmaker node
- Add a classifier, e.g. J48, from Classifiers
- Add a classifierPerformanceEvaluator node from “Evaluation”
- Add a text viewer from “Visualisation”

**Step2: Connect the nodes**

- Right click DataSource node and choose DataSet, then connect it to the ClassAssigner node.
- Right click ClassAssigner and choose DataSet, then connect it to CrossValidationFoldmaker.
- Right click CrossValidationFoldmaker & choose Training & Testing, then connect both to J48.
- Right click J48 & choose batch Classifier, then connect to classifierPerformanceEvaluator.
- Right click classifierPerformanceEvaluator & choose text, then connect to Text Viewer.

Step3: Run the process (using the default setups for each node)



Step4: View the results

- Right click DataSource node and choose “Start loading”, the process should run and “Status” window should indicate if the run is correct and completed.
- If the run is correctly completed, right click “Text Viewer” node and choose “Show results”, then another window pops out to show the results.

